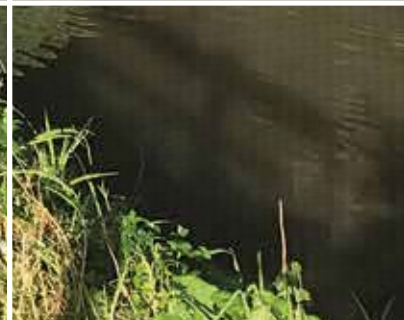
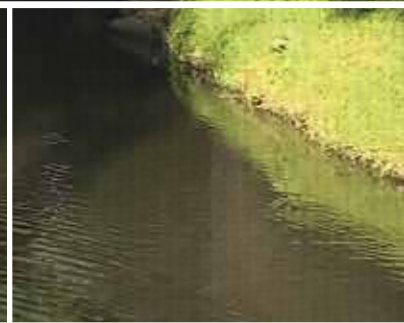


DCMC is funded by  
Banyule, Darebin,  
Whittlesea and  
Yarra Councils and  
La Trobe University.



Darebin Creek Management Committee Inc.

# ANNUAL REPORT 2016-17





# President's Report

The past year has provided some highs and lows, with a number of new strategies in place to guide our governance. The review by the Victorian Employment Chamber of Commerce and Industry (VECCI) made a number of recommendations which the organisation has now been implementing including processes that allow greater oversight to timesheets, leave applications, through to purchasing guidelines and vehicle use policies. With our payroll being backdated due to limited progression with the EBA, the organisation has been cognisant of returning to a stable platform to enable our objectives to be achieved.

Throughout the past year, the two divisions have continued their work with the Parklands taking on the role of managing the new lower sections of the Shared Trail and in particular, the revegetation of the remnant Napier Waller Reserve. Installation of a permanent orienteering course has also drawn increased visitation and recognition to the Darebin Parklands as a vital piece of Melbourne's open space. The Adopt-a-Creek program, successful grant applications and the completion of the Darebin Creek Management Plan were the mainstay of the Coordination Division's work for 2016/17.

Whilst our staffing continues it's steady state, this year again brought a number of changes to the representation from our member bodies with the recent retirement of long serving member Jeff Parkes from Banyule Council who has resided on the Committee for nearly two decades. His knowledge, dedication and influence in the direction of the organisation will be missed. We also had changes from La Trobe University with Anthony Thuennisen leaving, plus Whittlesea Council also amended its membership with both Cr Sam Alessi and Kristen Jackson leaving. Kristen contributed a significant amount to the organisation over the past few years and was instrumental in guiding us through the VECCI process.

These changes have unfortunately caused further red tape for our Deductible Gift Recipient Status with the Australian Charities and Not-for-profits Commission changes requiring notification of all amendments, plus new members requiring application and subsequent approval. I would like to thank the Ranger in Charge for his commitment to this process. Finally, and as always, thanks should be given to both retiring and new member representatives, and our long serving staff who cumulatively have over 70 years work with Darebin Creek Management Committee.

Kim Le Cerf  
President

# Coordinator's Report

During 2016-2017 the Coordination Division were involved in a number of planning processes including the Norris Bank Reserve Masterplan, Olympic Park Masterplan, LaTrobe Employment Cluster Masterplan, Northland Strategic Plan, and the Northern Regional Trail Strategy.

This year we revised our strategies and implementation of the education program as DCMC currently have involvement with a significant number of schools in the catchment spanning Kindergarten, Primary, Secondary and Tertiary.

Some big news this year was the confirmed sighting of a platypus in the Darebin Creek! This information went viral on Social Media and was helped by a further sighting two days later and observed for 20 minutes. Historical data is uncertain although it appears as though this is the first confirmed platypus in the creek for over two decades. There has been a lot of speculation over how the animal got so far up the creek given the physical impediments including the Parklands stepping stones and the concrete sections of channel under Bell Street.

The Lower Darebin Creek Shared Trail is on its way after twenty years of lobbying, designing, planning and construction delays. The final section of this missing link is underway and expected to be completed by January 2018. Multiple sections having been constructed including Napier Waller bridges, the main span across the Yarra River, further elevated boardwalk and significant other design elements such as fencing, access paths and flood mitigation infrastructure.

During 2016, the DCMC website was redeveloped. The main objective was to get the site off Dreamweaver and onto a Wordpress platform, with other objectives being to update all the information and improve the layout.

The Darebin Creek Management Plan is now complete and has been endorsed by a number of the Member bodies. The Management Plan identifies long standing concerns for the creek and will hopefully provide some further momentum for larger projects throughout the corridor. Having said this, the Committee should do its best to ensure each Council adopts the Plan as part of its own suite of endorsed documents which will give the plan far more relevance.

Adrian Infanti  
Co-ordinator



# Ranger's Report

Every year, the growing popularity of Darebin Parklands is becoming more evident as the local suburbs swell with more and more people who use the park for a variety of activities.

It is crucial that the Parklands is developed and managed to recognise this factor and the challenge increased and diverse use brings. Conflicting user groups need to be catered for with the main goal to maintain the bushland character of Darebin Parklands.

A review of the 2008 Masterplan is required to enable DCMC staff to manage the Parklands sympathetic to these changes in population and the demands confronting the park for the future 10 years.

We continue to reduce our mowing areas in the Parklands with our 25% reduction target well in sight. These old mowing sites are being converted into native grassland and woodlands zones.

We removed just under 10 tonnes of dog waste from the parklands via our eight dog waste bins which are serviced twice a week and we treated 16.5 mega litres of leachate through our system over the last 12 months.

We consolidated our management of Napier Waller and conducted planting and weeding days with Friends of Darebin Creek.

The DPA once again proved our great ally, participating in five Parkcare days helping us plant out new sites. The Thursday Crew turns up 36 weeks of the year and worked in both Snake Grass and along the creek planting and weeding as required.

The support of Councils, Darebin and Banyule is invaluable and I thank them for their ongoing support of Darebin Parklands and DCMC.

The installation of a new main entrance at Separation Street has transformed the experience for visitors new and regular at the Parklands while making us proud to be the Rangers of this unique park. Alison Breach and her team at Darebin must be congratulated along with Katy for overseeing the transformation of the main entrance.

The implementation of new policies from the VECI audit is underway and the establishment of the DCMC sub-committee for DCMC staff to respond to a great step forward.

I would like to thank the DCMC Committee and in particular Alison Breach and Jeff Parkes for their guidance and support throughout the year. I'd also like to thank a vital cog in the wheel Phillip Davies for his excellent management of the Parklands and DCMC funds.

Finally thanks to my colleagues at DCMC who put up with me for the past year and Katy for her excellent work and support.

Peter Wiltshire  
Senior Ranger





# Catchment Map





# Catchment Snapshot

## Grants

This year we have enjoyed the upgraded buildings from the Stronger Communities Grants with new heating/cooling and a kitchen for staff and volunteers. In the next round of funding we will upgrade our outdoor learning area between the existing buildings. This will allow us to cater for larger groups in all weather. We also received two litter grants to improve litter outcome in the Preston area as well as the whole of the Darebin Creek Catchment. These grants allowed us to engage with schools and communities across the catchment at various locations and concentrate on site specific litter at schools, parks and community centres.

## Promotion of Darebin Creek

This year to promote the new DCMC website a number of non-slip floor signs were put on the Shared Trail directing people to find out more about Darebin Creek. An Instagram account @darebin\_creek has been set up to generate interest via social media. So far it has been useful in the communication of messages and information about Darebin Creek events, flora and fauna and educational messages about issues such as litter.

## Friends Groups

The Friends of Darebin Creek and the Darebin Parklands Association have over 300 paid up members combined. This is a real asset for the Darebin Creek to have a large number of community members who dedicate their time and money to improve the Darebin Creek.

The Darebin Creek Sweepers and Thursday Crew are two smaller groups of dedicated volunteers. The Thursday Crew work in a remnant area of the Darebin Parklands known as Snake Grass as well as other locations in the Darebin Parklands to maintain remnant vegetation, while the Sweepers focus on cleaning up the creek where needed.

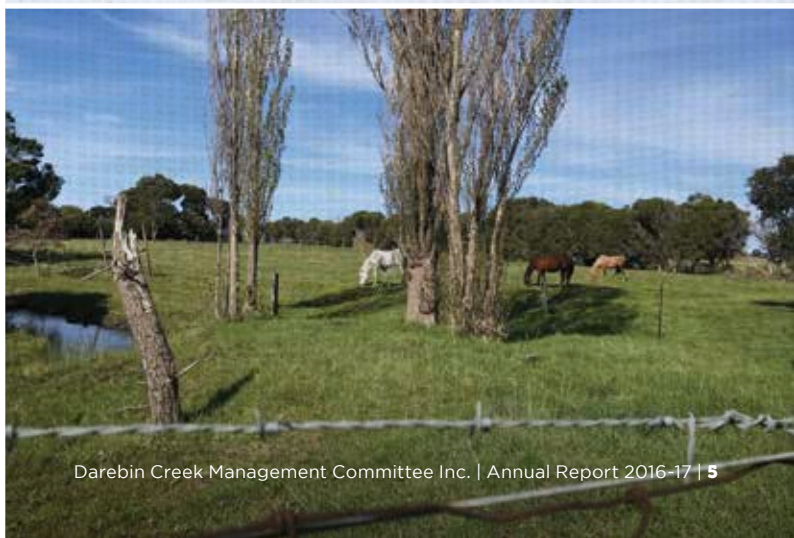
## Education

2016-2017 was another busy year for the Darebin Creek Education Program. We worked with 1834 students from twenty-one schools, investigating creeks and stormwater and what students can do to help. Popular activities included Water Testing, Creek Clean Ups, What is that Waterbug?, The Catchment Story Roleplay and Fascinating Frogs.

A recent directive of the Committee has been to expand our school range beyond our creek catchment area borders to the whole of the Banyule, Darebin and Whittlesea local government areas. This along with our upcoming Adopt A Creek Spot project will lead to a significant increase in student numbers and participating schools. We have also seen an increase in demand for involvement from Kindergartens and childcare centres, as the importance of nature play and bush kinder participation increases.

There has been a good response from schools to our Adopt A Creek Spot program. Starting in the second half of 2017, we began recruiting schools that are located within walking distance of the creek. The aim is to get the schools to have an ongoing sense of stewardship of their local stretch of creek. In addition to the regular stormwater education sessions for schools the project offers a clean-up kit, non-slip artwork with clean stormwater messages, and nestbox construction.

DCMC initiated a Litter Investigation with Year 7 students from St Monica's in Epping. St Monica's shares its boundary with the Darebin Creek, found that chip wrappers and zip lock bags were blowing into the creek from the school. Students picked up 2,377 pieces of rubbish along the Darebin Creek in two days. Other outcomes included raising awareness about reducing litter being dropped on the ground and new bin signage to assist recycling and general waste.





# Treasurer's Report

DAREBIN CREEK MANAGEMENT COMMITTEE INC  
SUMMARY TREASURERS REPORT  
FOR YEAR ENDING 30/6/2017

## Summary

Surplus: \$6,010 compared with \$21,300 in 2016

Overall the financial position of DCMC remains satisfactory. The surplus for 2017 can be attributed to several items

a) Consultancy Fees. VECCI were engaged to provide advice and recommendations on a number of internal procedural areas. Implementation or changes based on the advice on these is ongoing.

b) Printing of replacement DCMC Brochures.

c) General Equipment Maintenance.

d) Delay in receiving some recurring funding until later in the new financial year,

e) Computer software and web & internet costs

Our cash at bank position including term deposits improved by \$62,912 in 2017.

Our bank balances remain satisfactory to meet all commitments as they fall due. Our cash reserves at 30/6/2017 would cover expected outgoings in 2017/18 before recurring funding is received. Most recurring funding is expected in the first quarter of 2017/2018.

## Income Statement

As tabled - Income

(i) Recurring Funding \$ 499,887 (.15 % increase)  
It is expected that this funding will be held at similar OR 2.5% increase amounts in 2017/18.

(ii) Non Recurring Funding \$40,184 down from \$83,615 due to lower grant income

(iii) Interest Income \$6,848 42% decrease, lower rates paid on deposits and delay in receiving some recurring funding deposits

(iv) All annual returns are completed as per legal requirements.

B) Expenditure

Wages: Overall wage costs were impacted by the scheduled wage increase from the current EBA for Banyule Council.

Administration: Most expenses were consistent with normal activities with the exception of Consultancy Fees to VECCI of \$16,601 associated with procedural review.

Computer software, related equipment purchases and internet usage up by \$1,460.

Other maintenance costs up \$2,426.

Leachate Maintenance costs were steady at \$23,402.

## Balance Sheet (as tabled)

C) Bank Balances - \$594,252 -  
A healthy position still.

D) Insurance costs are treated as a monthly expenses allocation. Payment of premiums allocated to asset account as invoiced and paid.

E) Fixed assets status. Net Balance \$167,092

F) Net Assets \$468,749 2016 \$462,739

G) Liabilities We expect to complete OR progress current grant projects in 2017/18. Balance at 30/6/2017 \$95,101

H) GST & PayG liabilities are met within the normal deadlines.

I) The Long Service Leave entitlements (current -10year plus) and <10years (non-current) have been provided for as per the appropriate Legislation and current EBA.

Phillip Davies  
Treasurer



# Balance Sheet

AS AT 30TH JUNE 2017

	2017	2016
<b>Current Assets</b>		
Cash and cash equivalents	594,252	531,340
Receivables	-	7,293
Prepayments	15,819	17,597
Total current assets	610,071	556,230
<b>Non-Current Assets</b>		
Property, plant and equipment	167,092	146,658
Total non-current assets	167,092	146,658
<b>Total Assets</b>	<b>777,163</b>	<b>702,888</b>
<b>Current Liabilities</b>		
Payables	48,473	24,107
Unexpended Grants	95,101	79,084
Provisions	129,462	102,621
Total current liabilities	273,036	205,812
<b>Non-Current Liabilities</b>		
Provisions	35,378	34,337
Total non-current liabilities	35,378	34,337
<b>Total liabilities</b>	<b>308,414</b>	<b>240,149</b>
<b>Net Assets</b>	<b>\$468,749</b>	<b>\$462,739</b>
<b>Equity</b>		
Retained surplus	468,479	462,739
<b>Total Equity</b>	<b>\$468,749</b>	<b>\$462,739</b>

# Income Statement

FOR THE YEAR ENDED 30TH JUNE 2017

	2017	2016
<b>Revenue from operating activities</b>	<b>540,071</b>	<b>582,734</b>
<b>Expenditure from operating activities</b>		
Employee benefits expense	391,493	370,655
Depreciation	40,031	34,573
Other expenses	102,537	156,206
Total Income	534,061	561,434
<b>Net surplus for the year</b>	<b>6,010</b>	<b>21,300</b>
Accumulated surplus at the beginning of the financial year	462,739	441,439
<b>Accumulated surplus at the end of the financial year</b>	<b>\$468,749</b>	<b>\$441,739</b>



## Our Mission

The Committee has been established to ensure the preservation, restoration, environmental protection and ecologically sensitive development and maintenance of the Darebin Creek Linear Park.

## Membership

### City of Banyule

Jeff Parkes (Secretary)  
Cr. Peter Castaldo

### City of Darebin

Cr. Kim Le Cerf (President)  
Alison Breach

### City of Whittlesea

Cr. Sam Alessi  
Kristen Jackson

### City of Yarra

Justin Hanrahan

### La Trobe University

Anthony Theunissen

### Treasurer and Public Officer

Phillip Davies

### Friends of Darebin Creek

Michael Bradley

### Darebin Parklands Association

James Garriock

### Committee Employees

Peter Wiltshire (Ranger in Charge)  
Katy Marriott (Ranger)  
Adrian Infanti (Coordinator)  
Peter Grenfell (Project Officer)  
Therese Grinter (Project Officer)  
Candice Sexton (Casual Officer)

### Volunteers

Michael Mann  
Thursday Crew



Darebin Creek Management Committee Inc.  
PO Box 5093 Alphington 3078  
03 9499 4454  
info@dcmc.org.au

**www.dcmc.org.au**

